

COOKIE

MONTAGGIO DIVISORIO H. 200



Montaggio Divisorio h. 200 / H. 200 Divider Assembling Instructions /
Instructions d'assemblage du diviseur h. 200 / Instrucciones de montaje del divisor h. 200

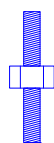
Viti a testa tonda M8 pz. 4
M8 round screws 4 pieces



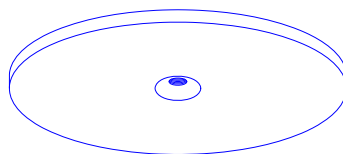
Flange pz. 4
Rings 4 pieces



Connettore filettato M8 pz. 4
M8 threaded junction 4 pieces



Basi in metallo con foro
svasato dal lato inferiore
pz. 4
Metal base with flared hole
on the lower side 4 pieces



Viti a testa svasata M8 pz. 4
M8 flared screws 4 pieces

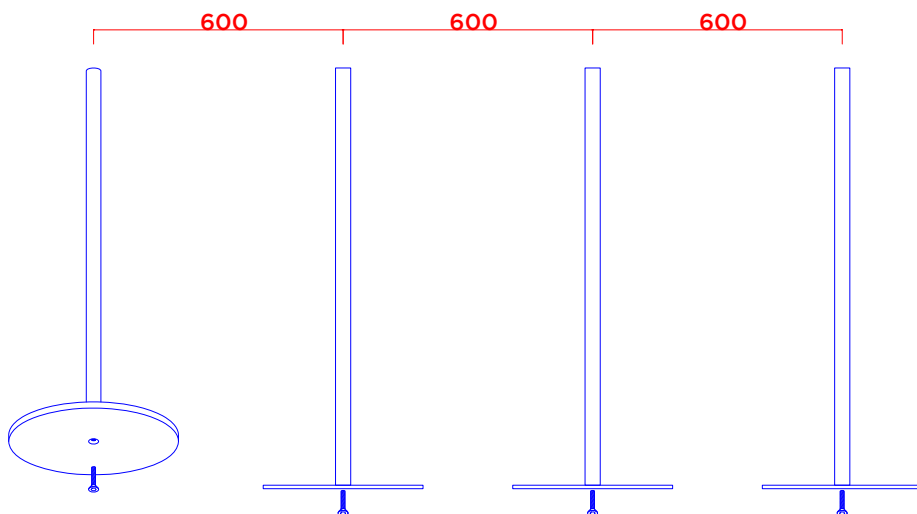


Pali in metallo con filetto in
entrambe le teste pz. 8

Metal post with thread on both
heads 8 pieces

1.
Avvitare le basi ai tubi con testa
filettata usando le viti svasate /
Fix bases on posts by using flared
screws.

2.
Posizionare i quattro elementi montati
ad una distanza di 600mm dall'asse /
Place four assembled elements at a
distance of 600mm from the axis



COOKIE

MONTAGGIO DIVISORIO H. 200



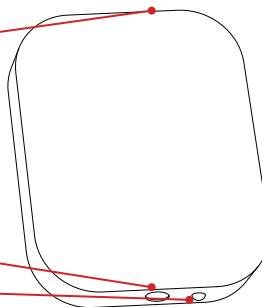
Montaggio Divisorio h. 200 / H. 200 Divider Assembling Instructions /
Instructions d'assemblage du diviseur h. 200 / Instrucciones de montaje del divisor h. 200

3.
Modulo in plastica piccolo / Small
plastic element dim 40x50x10:

Logo LYXO / LYXO logo

Foro per palo strutturale / Hole for
structural post

Pin anti rotazione / Anti rotation pin

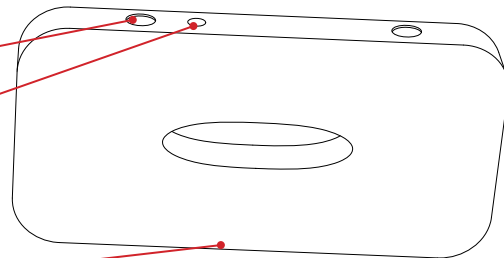


4.
Modulo in plastica grande / Big plastic
element 100x50x10:

Fori per pali strutturali / Holes for
structural post

Sede per Pin anti rotazione / Housing
for anti-rotation pin

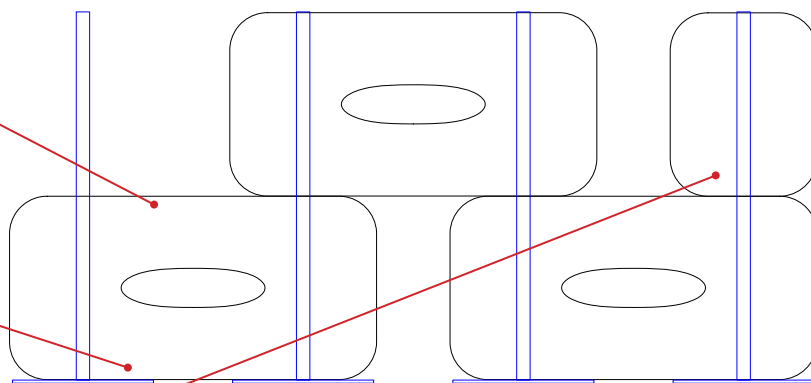
Logo LYXO / LYXO logo



5.
Inserire i moduli grandi facendo
attenzione che la sede per il Pin sia
verso l'esterno della composizione /
Insert big elements by placing pin hole
outwards

6.
Inserire i moduli grandi controllando
che abbiano il logo verso il lato
inferiore /
Insert big elements with Lyxo logo on
the lower side

7.
Inserire i moduli piccoli controllando
che abbiano il logo verso il lato
superiore; far combaciare il Pin con
la nicchia sul modulo grande / Insert
small elements with logo on the upper
side; match anti-rotation pin with
housing on the big element



COOKIE

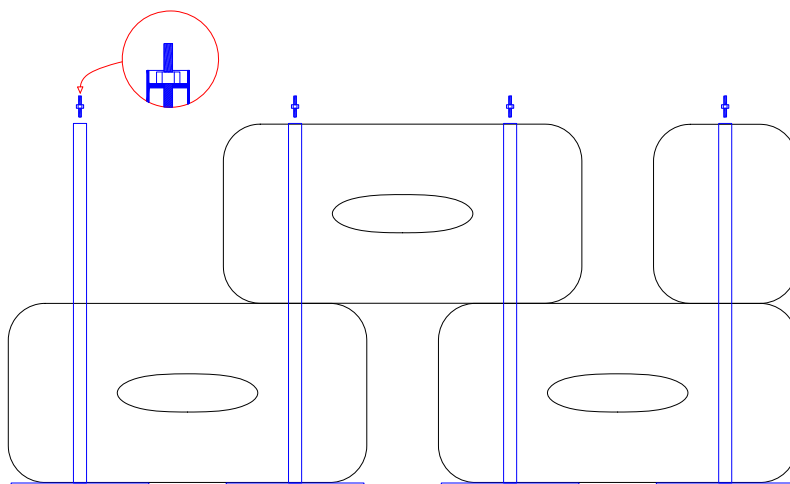
MONTAGGIO DIVISORIO H. 200



Montaggio Divisorio h. 200 / H. 200 Divider Assembling Instructions /
Instructions d'assemblage du diviseur h. 200 / Instrucciones de montaje del divisor h. 200

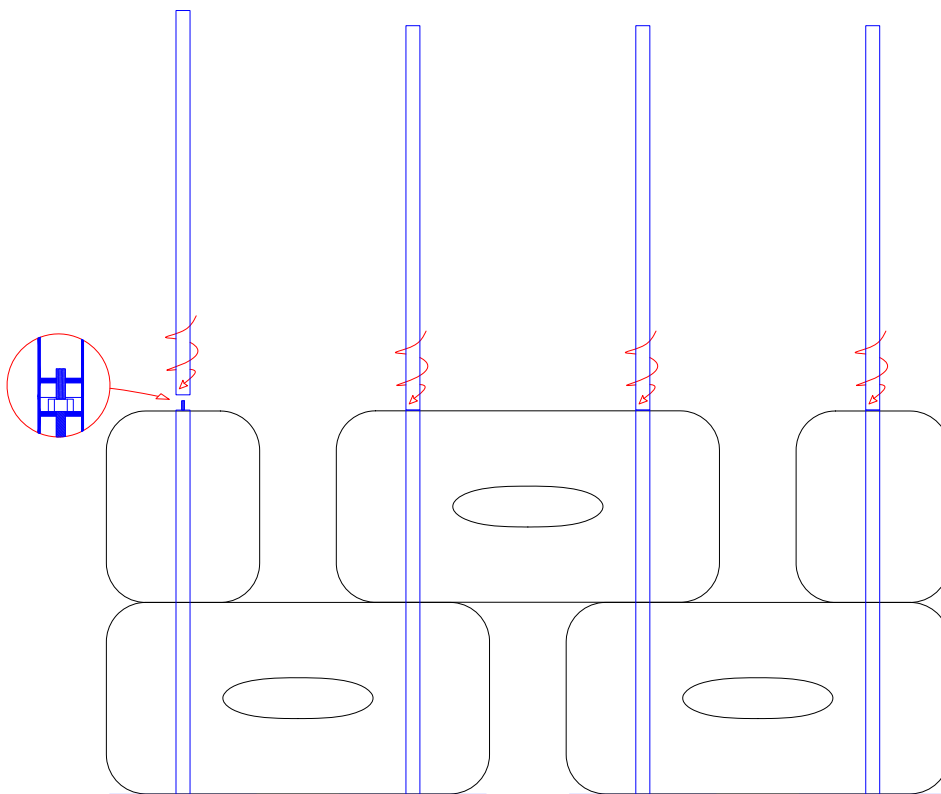
8.

Avvitare i connettori filettati fino a fine corsa come indicato nel disegno / Fix threaded connectors as far as it will go by following the drawing.



9.

Avvitare i pali con teste filettate fino a fine corsa come indicato nel disegno / Screws posts with threaded heads as far as they will go, following the drawing



COOKIE

MONTAGGIO DIVISORIO H. 200



Montaggio Divisorio h. 200 / H. 200 Divider Assembling Instructions /
Instructions d'assemblage du diviseur h. 200 / Instrucciones de montaje del divisor h. 200

10.

Fissare con le viti a testa tonda le 4
flange /
Fix with M8 round screws rings

